



HARRIS COUNTY WATER CONTROL &
IMPROVEMENT DISTRICT NO. 116

WATER PLANT FACILITIES



WATER WELL 1 AND
RIGHT ANGLE DRIVE



BOOSTER PUMPS



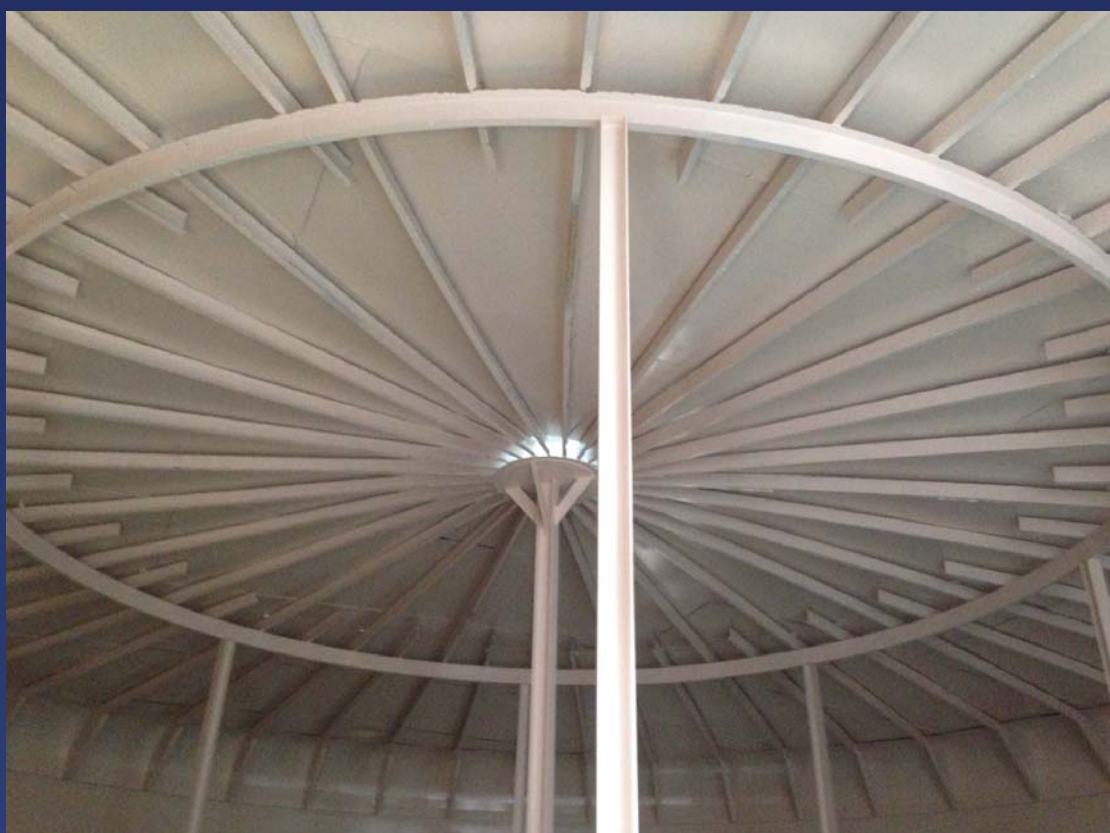
5,000 GALLON
HYDRO-PNEUMATIC TANK



SOUTH 400,000 GALLON
GROUND STORAGE TANK



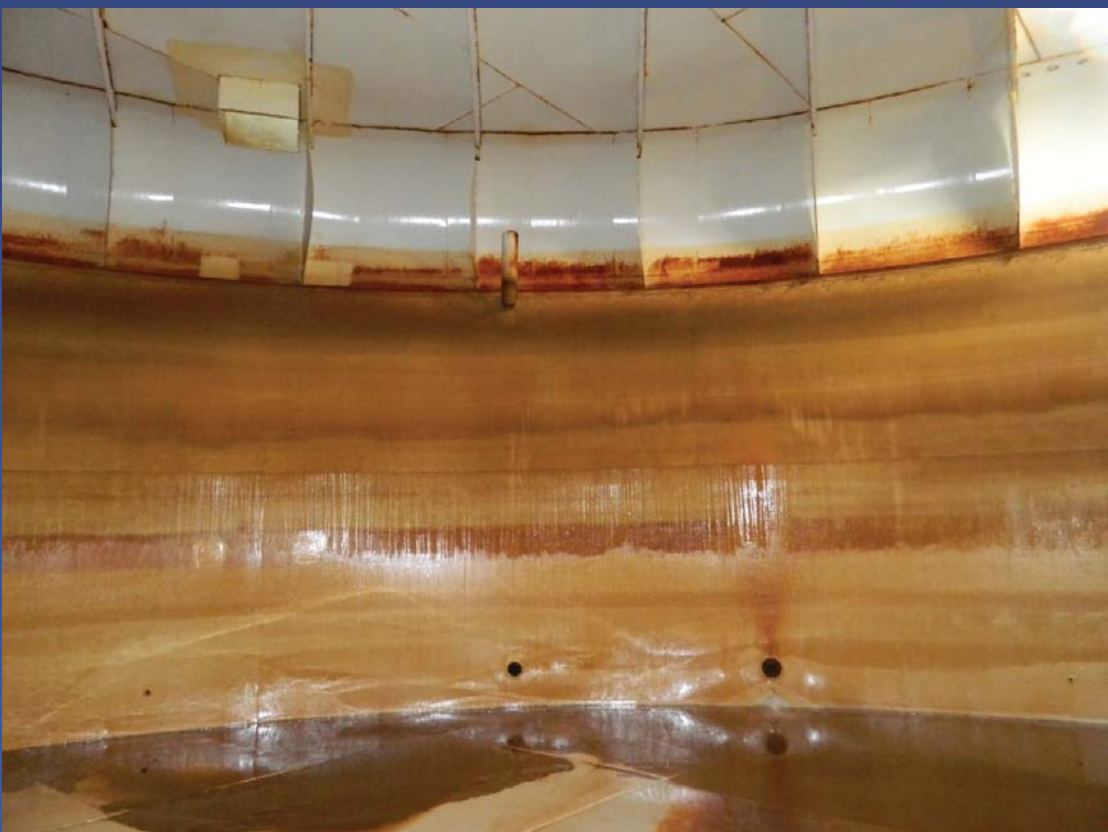
SOUTH GST INTERIOR PRE-
REHABILITATION



SOUTH GST INTERIOR
POST-REHAB



NORTH 400,000 GALLON
GROUND STORAGE TANK



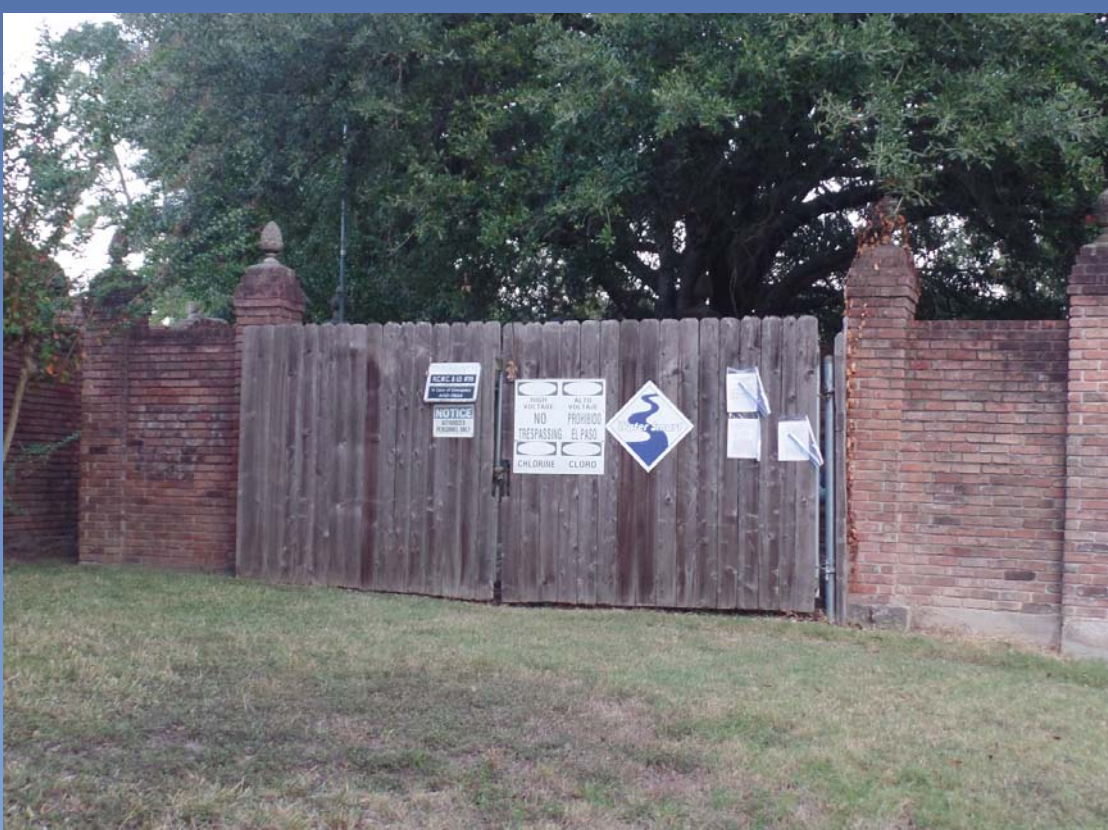
NORTH GST PRE-REHABILITATION



NORTH INTERIOR POST-REHAB



WATER PLANT BUILDING



REMOTE WATER WELL NO. 1



REMOTE WATER WELL NO. 2

HARRIS COUNTY WATER CONTROL & IMPROVEMENT DISTRICT NO. 116

WASTEWATER TREATMENT PLANT FACILITIES



- 1,300,000 GALLONS PER DAY WASTEWATER TREATMENT PLANT
- JOINT PLANT WITH HEATHERLOCH MUD

- HARRIS COUNTY WCID No. 116 SHARE IS 46.15% FOR ALL CAPITAL IMPROVEMENT PROJECTS



WASTEWATER TREATMENT
PLANT BUILDING



LIFT STATION AND
BLOWER BUILDING



CHEMICAL BUILDING



CLARIFIER



CLARIFIER BRIDGE



GENERATOR

HARRIS COUNTY WATER CONTROL &
IMPROVEMENT DISTRICT NO. 116

250,000 GALLON
ELEVATED STORAGE TANK



DURING REHABILITATION



AFTER REHABILITATION



AFTER 2015 REHABILITATION



HARRIS COUNTY WATER CONTROL &
IMPROVEMENT DISTRICT NO. 116
WASTEWATER DISTRIBUTION SYSTEM



LONG TERM PLAN



CURED-IN-PLACE LINING (CIPP)



MANHOLE REHABILITATION



NEW SANITARY SEWER LINES
AND SERVICES

- APPROXIMATELY 43,100 LINEAR FEET OF SANITARY SEWER PIPE, RANGING IN SIZE FROM 6-INCH TO 24-INCH
- APPROXIMATELY 365 MANHOLES
- DISTRICT IS APPROXIMATELY 36% COMPLETE WITH OVERALL SYSTEM REHABILITATION